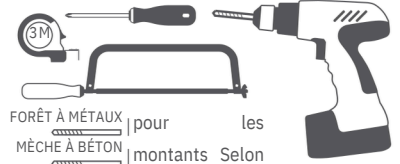




OUTILLAGE NÉCESSAIRE



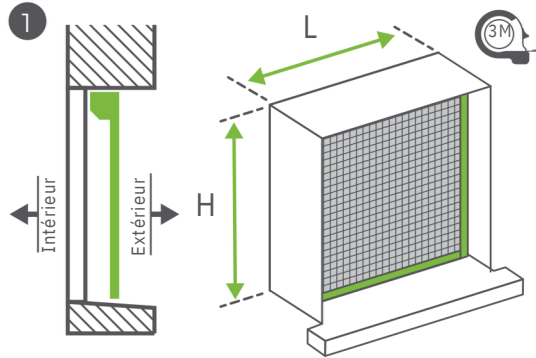
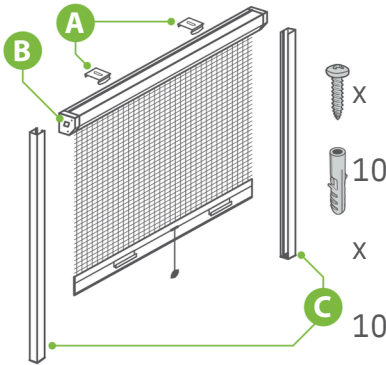
maçonnerie
NOMBRE DE PERSONNES
CONSEILLÉES : 1

Mesurez la largeur et la hauteur précises entre les murs. Nous vous conseillons de prendre la largeur à 3 endroits différents (garde la valeur la plus faible).

HAUTEUR :

LARGEUR : mm

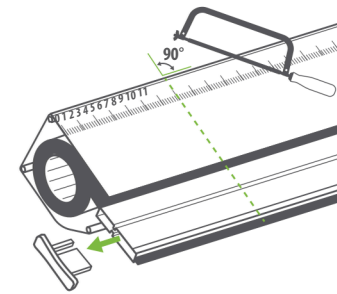
MOUSTIQUAIRE ENROULABLE ALUMINIUM



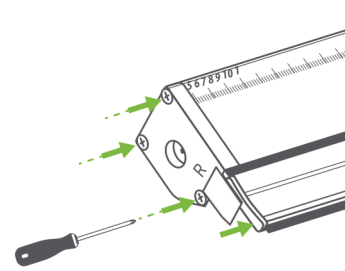
2 La recoupe se fait côté gradué (côté droit (R)).



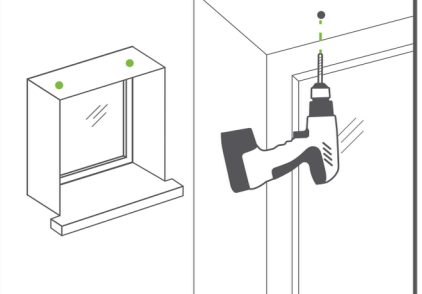
3 **RECOUPE :**
• L. = 80cm : 20cm max.
• L. >80cm : 40cm max.



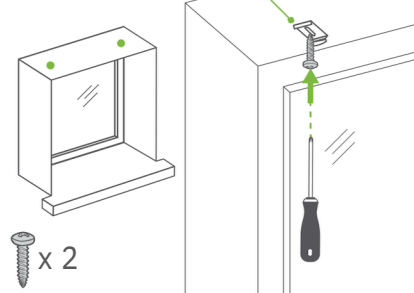
4



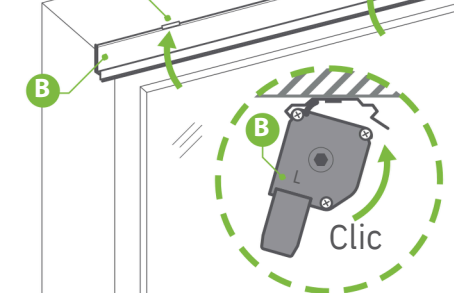
5 x 2



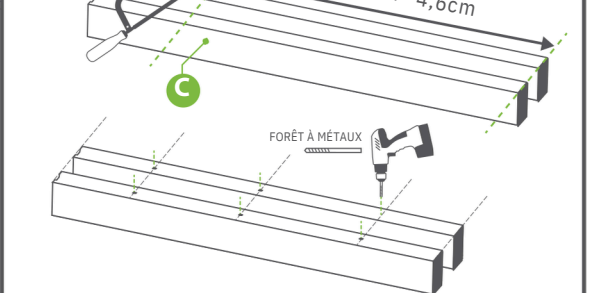
6



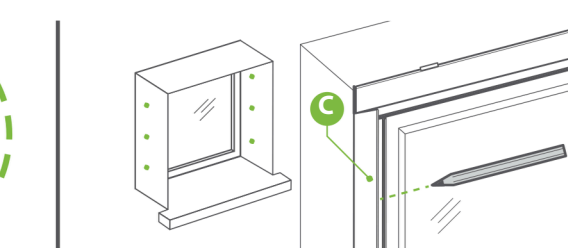
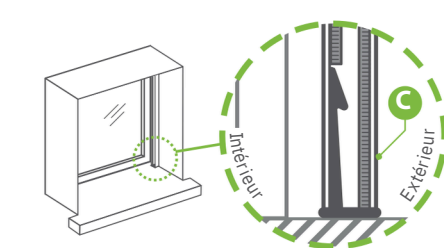
7



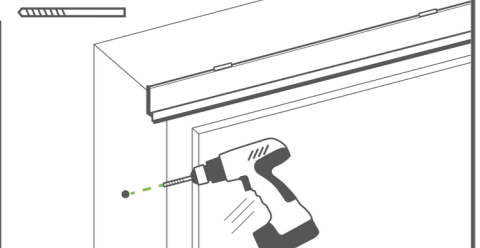
8



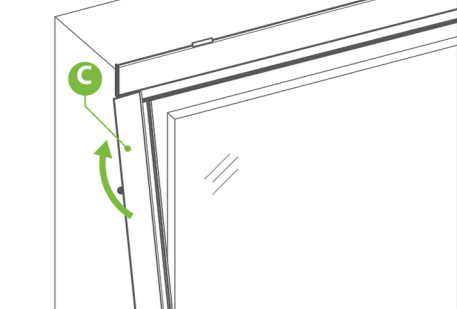
9 Présenter les deux montants à la maçonnerie, tracé les trous de fixation à l'aide d'un crayon. Retirer les montants, percer et insérer les chevilles.



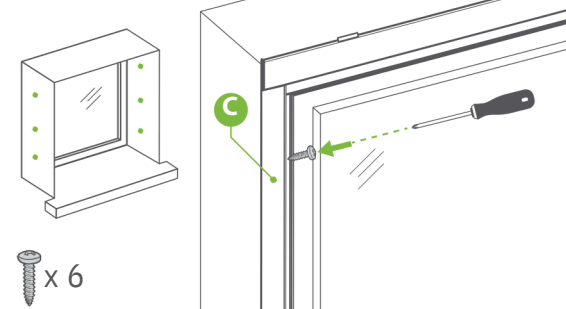
..... x 6



10



11



OK

